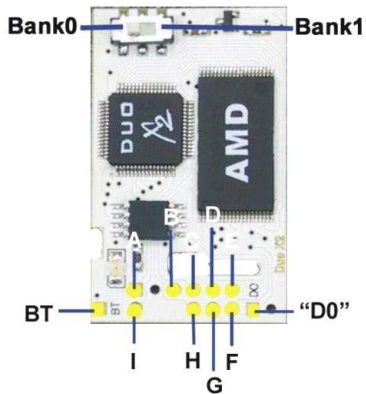


# Duo X 2 - v1.0 Diagram

## Cromwell/FlashBios edition

### Operating Instructions

Original Bios Mode (Duo X disabled)



- Power on the Xbox with the "Eject" button

Duo X 2 Mode (Duo X 2 enabled)



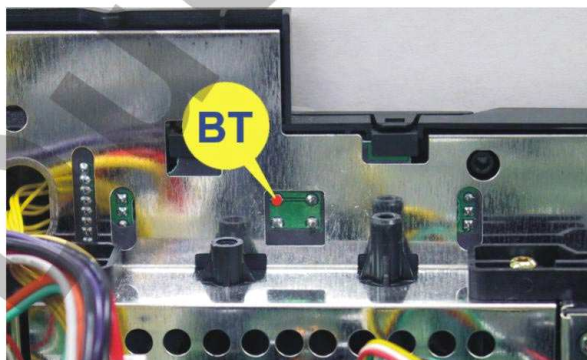
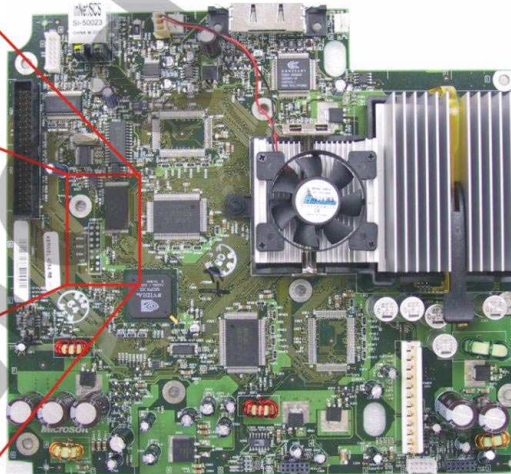
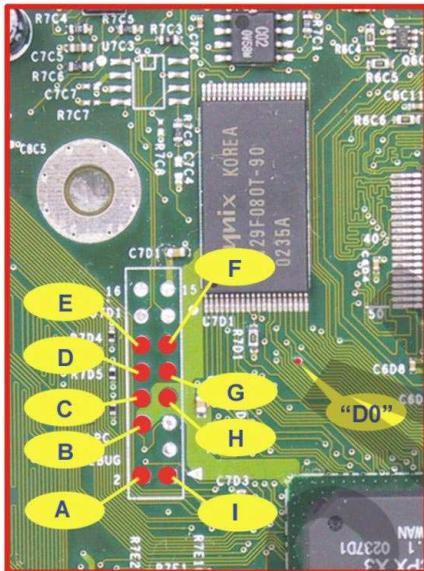
Bank 0 (v1-v1.6)



Bank 1 (v1-v1.6b)

Power on the Xbox with the "Power" button

Further information on flashing bios etc. can be found at the following websites: [www.xbox-scene.com](http://www.xbox-scene.com), [www.duomodchip.com](http://www.duomodchip.com), [www.xbox-linux.org](http://www.xbox-linux.org)



BT is situated behind the "Eject" button.