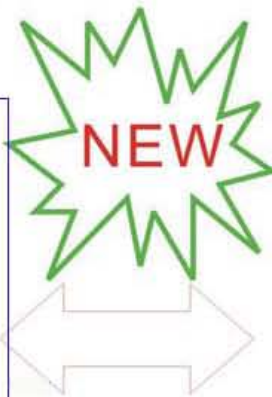
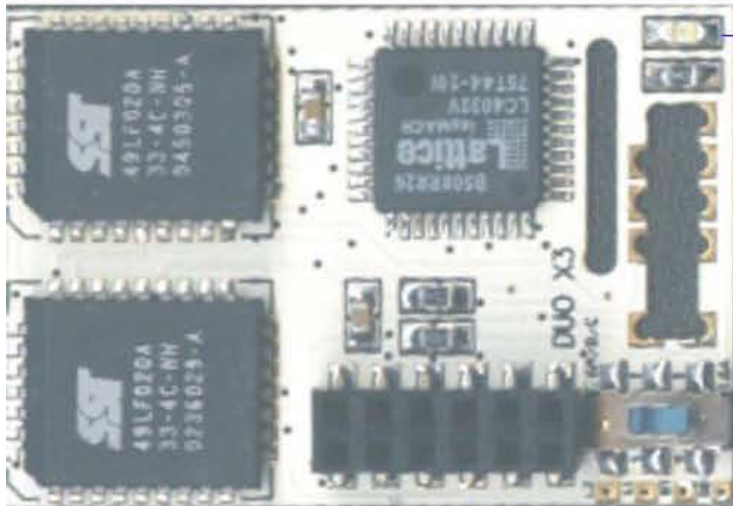


# DUOX3 V1.3 / 1.5

Xbox Duox3 Installation / Duox3 Xbox Version 1.6a/1.6b/1.6c

## DUO X3



# FOR XBOX 1.6



LED is the indicator to show if Duo x3 is enable or not!!  
LED off, means online game is ready

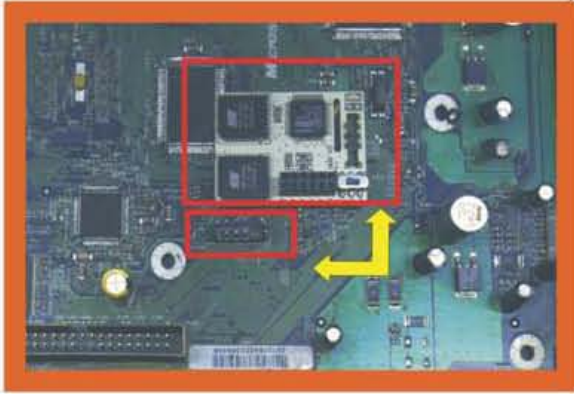
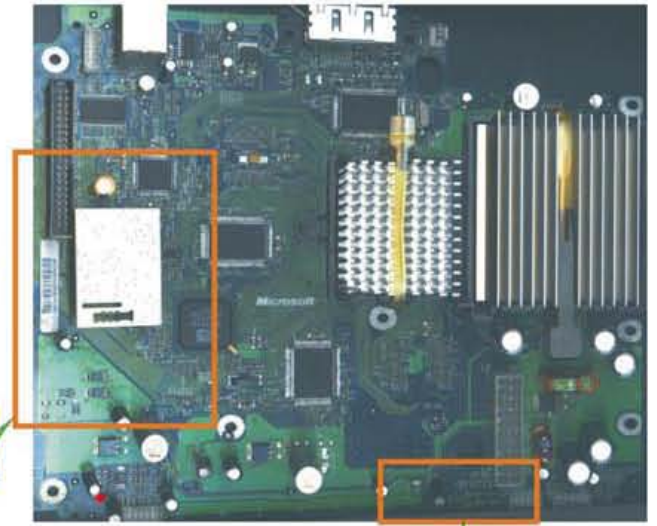
L2 BT L1 D0

L2

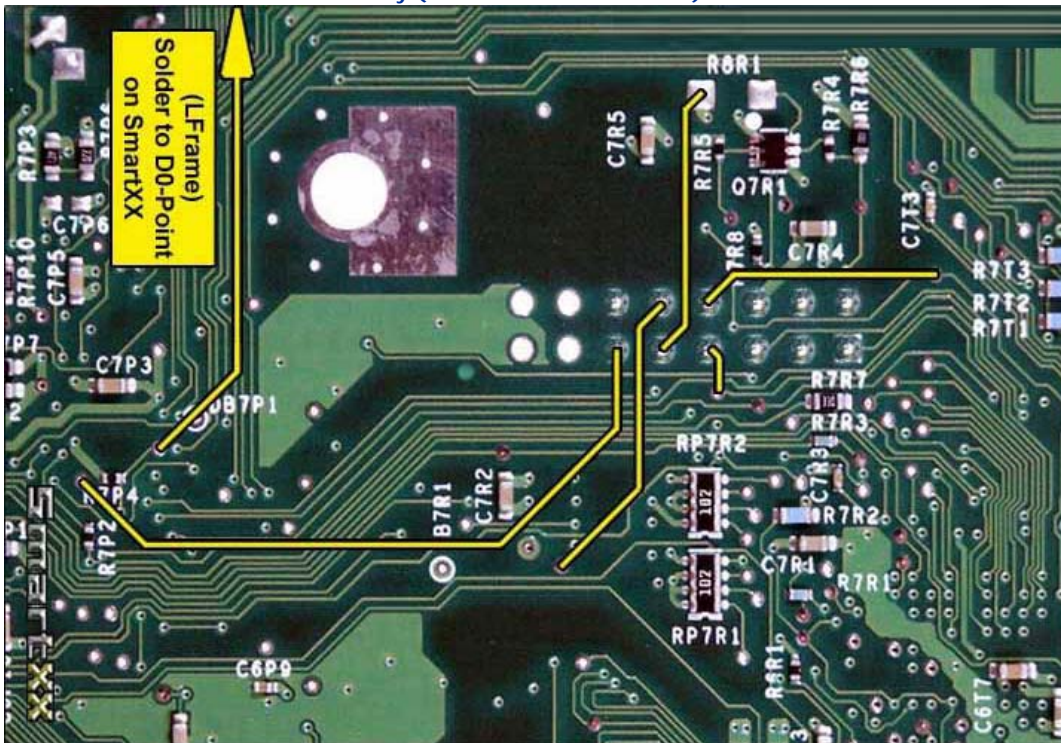




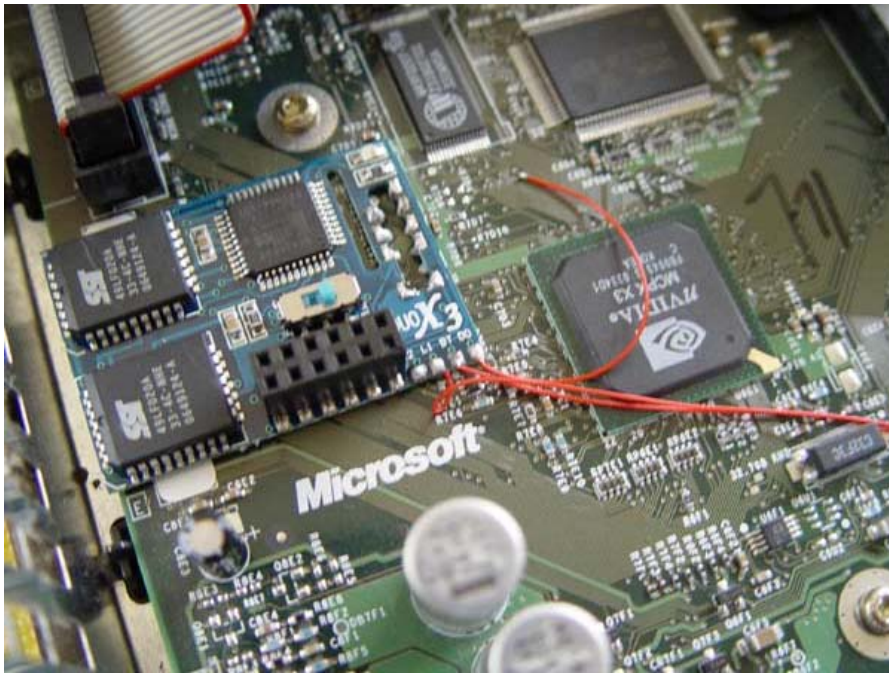
PCB back



LPC Rebuild 1.6 Xbox Main Bord Only (Underside of Main Board)



Duox3 Completed Installation



---

### Duox3 - XBOX - Standard Installation - Hold Power 2 Seconds to ARM Chip

1. Connect all 9 LPC Points - Either Method- eg. Direct Solder ( as shown ), Pin Headers or Wired.
2. Connect BT, DO and L1 Point on DuoX 3 to points shown on Xbox Main Board ( Connect The Dots with Wire )
3. Dont need - connect L2 - to M/B - also Known as Hard Drive Activity ( advise connecting L2 - on Xbox 1.6 )
4. Put small insulation barrier underside of chip ( Directly under points L2, L1, BT & DO - to prevent short )
5. Select Correct Switch Setting on DUOX 3 for Bios Bank Selection - Xbox 1.6 or all Other Xbox Versions
6. 1.6 Xbox Only - LPC Rebuild must be done on reverse side of Main Board

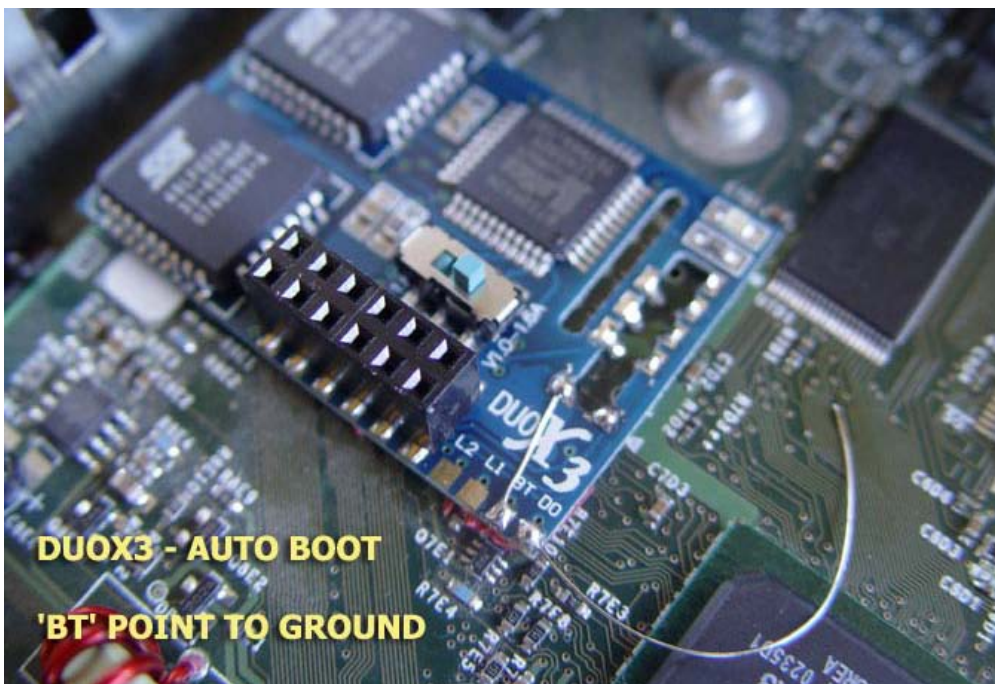
---

### DuoX3 Installation Tips

#### DuoX3 xbox mod-chips can be installed 3 ways:

- 1) The preferred method is Direct Solder the main LPC points straight to the Xbox Main Board Contact Points - As Above
- 2) Position the DuoX3 modchip using Double sided Tape on the Xbox Main Board and use single strand Wire to connect to the Main Board LPC contact Points.
- 3) The least popular way is to use the pin headers that are packaged with the DuoX3 mod-chips.

Then to complete the installation use single strand wire to the main DuoX3 points (L1 , BT, L2, DO)



### **Duox3 - XBOX - Auto Boot Installation - DUOX 3 Chip Power on - Quick Tap**

1. Connect all 9 LPC Points - Either Method- eg. Direct Solder ( as shown ), Pin Headers or Wired.
2. Connect BT Point on DuoX 3 to Ground - Any Ground on Xbox Main Board or any Ground on Duox3 Chip
3. Dont need - connect L1 - BT or L2 to M/B)
4. Put small insulation barrier underside of chip ( Directly under points L2, L1, BT & DO - to prevent short )
5. Select Correct Switch Setting on DUOX 3 for Bios Bank Selection -
6. 1.6 Xbox Only - LPC Rebuild must be done on reverse side of Main Board