

NDURE INSTALLER 3.0 README

README

Next dimension uber rmenhal exploit

NDURE INSTALLER 3.0

WHAT IS IT: Ndure installer installs includes necessary files needed to run ndure on a xbox. This installer includes very basic sets of files and also advance components and configuration for users. You can also use it as a patch for C drive files to replace C drive with fully softmodded files. This readme assumes that you have intermediate knowledge of your xbox although if you follow the instruction carefully, anyone can install the Ndure safely.

OFFICIAL TOPIC: Visit the official topic for more information and in depth tutorial with pictures.

URL: <http://forums.xbox-scene.com/index.php?showtopic=411052>

USAGE:

1. [Basic setup](#)
2. [Retail setup](#)
3. [Patching C drive files](#)
4. [Uploading](#)
5. [Ndure installer for xboxhdm](#)
6. [UDDAE](#)
7. [Credits](#)

NDURE INSTALLER 3.0

1. Basic Setup (Softmod without any retail msdash access):

Start the installer. Select and output folder. You can either choose the "Basic Setup" profile from drop-down menu or Check the following boxes:

Basic Files

Add Shadowc (Add shadowc image)

Kernel xxxx fonts (choose your kernel)

Ndure toolset (Unleashx based script to manage your softmod, optional)

This will create a folder with minimum files needed to run Ndure. This setup includes Nkpatcher, Unleashx, and shadowc. If you do not check your kernel specific fonts, it will include generic fonts.

Files needed to upload for a basic setup:

C DRIVE: bios folder (C:\ root), media folder (C:\ root), xboxdash.xbe (C:\ root), earnie.xtf and xbox.xtf (C:\xodash\), shadowc folder (C:\ root)

E DRIVE: dash folder (E:\ root), ndts folder (E:\root)

2. Retail Setup (Softmod with tray state booting):

Start the installer. Select and output folder or use the default one. You can either choose the "Full Retail Setup" profile from drop-down menu or Check the following boxes:

Basic Files

Retail Files

Add Shadowc (Add shadowc image)

Kernel xxxx fonts (choose your kernel)

Ndure toolset (Unleashx based script to manage your softmod, optional)

This will create a folder with tray state booting ability to original MS Dash. If you start your xbox with the power button, It will boot to modded state and run unleashx. If you start the box with eject button (tray open), it will boot to MS dash with unmodded state.

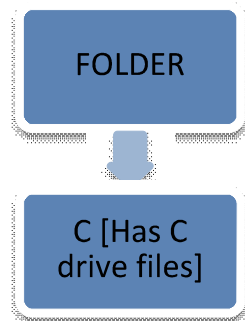
Files needed to upload for a retail setup:

C DRIVE: bios folder (C:\ root), media folder (C:\ root), xboxdash.xbe (C:\ root), xb0xdash.xbe (C:\ root), earnie.xtf and xbox.xtf (C:\xodash\), shadowc folder (C:\ root), xonlinedash.xbe (C:\xodash\), x0nlinedash.xbe (C:\xodash\), x2onlinedash.xbe (C:\xodash)

E DRIVE: dash folder (E:\ root), ndts folder (E:\root)

3. Patching C drive files:

For this, it is recommended that you have latest MS dash (5960.01 V. 185EAD00). Have all of the dash files in a folder named "C". Next, run the installer with your appropriate choices. As a destination folder, select the parent folder that has your dash files "C" folder in it (don't select "C" folder). The installer will add/rename/delete necessary files and create a complete C drive replacement.



Select "FOLDER" as destination, not "C" folder.

UPLOADING TO XBOX:

First make sure that you do not have a 4 MB file called "settings_adoc.xip" in xboxdashdata.185EAD00 in "C" folder or C drive. If there is the 4 MB file, then delete it (but don't delete it if it's smaller). Upload the files with any ftp client. You can batch upload the files if you wish. It is necessary that you upload earnie.xtf (In xodash folder) first and then upload xbox.xtf (In xodash folder). Since all ftp clients uploads files in Alphabetical order, it will upload earnie.xtf before xbox.xtf. Check your ftp log to see the order or you can upload the fonts manually to C:\xodash\ folder.

NDURE INSTALLER FOR XBOXHDM

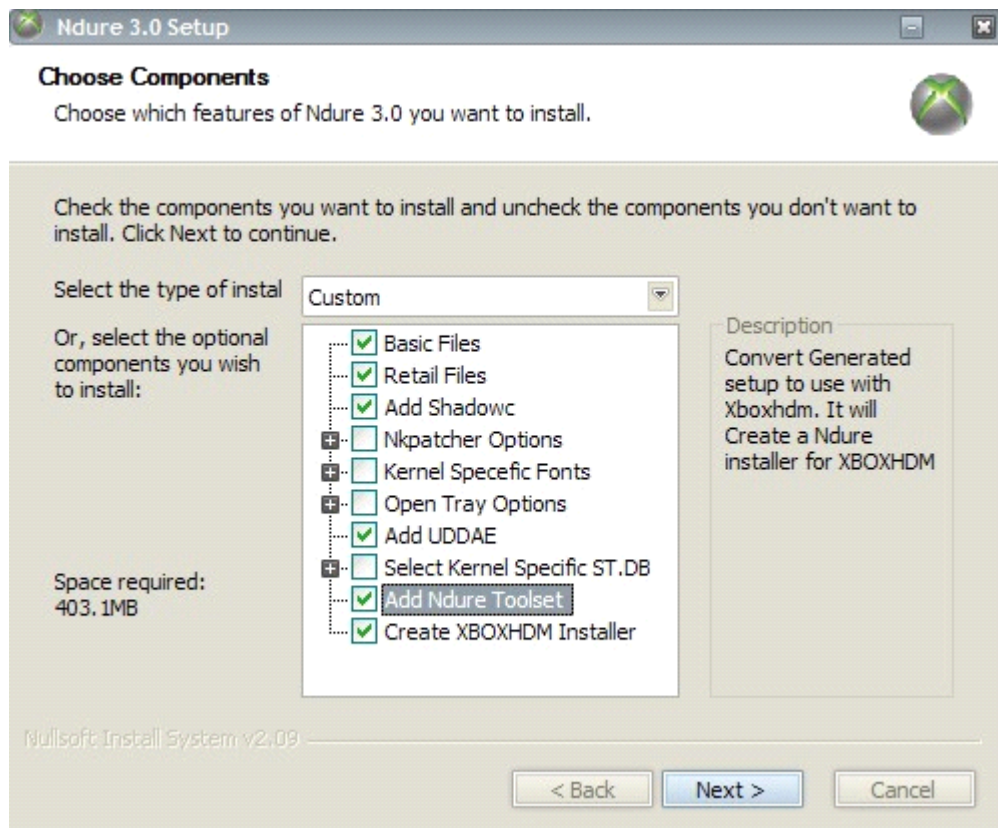
NDURE INSTALLER FOR XBOXHDM

NDURE INSTALLER 3.0

WHAT IT IS: Allows you to install ndure files generated by Ndure pc installer with xboxhdm.

HOW TO USE:

Create your appropriate Ndure setup. Check the "create xboxhdm installer"



Copy the created "ndure" folder to "xboxhdm/linux" folder.

A clean xbox C drive should look like the picture below, on the left side, browse to your "ndure" folder in cd:

Left	File	Command	Options	Right
*<-/CD/ndure				
	Name			Size
	./			IUP--DIR
	/C	LEFT		2048
	/E			2048
	*checkid			0
	*ndure			6384
+<-/PriMas/C				
	Name			Size
	./			IUP--DIR
	/Audio	RIGHT		16384
	/fonts			16384
	/xboxdashdata.185ead00			16384
	/xodash			16384
	*XBox Book.xtf			16669K
	*Xbox.xtf			15248K

Move over "ndure" file and press "enter". After the script launches, select your option and press enter. The script will copy ndure files:

OPTIONS:

Option 1: copies files generated by ndure pc installer. Option 2 completely erases C drive and copy ndure files.

Option 2: Useful if you want a clean ndure installation or you used ndure installer to patch C:\ drive files. Option 2 is recommended if you want to use shadowwc, UDDAE and other features without problem.

Option 3: Installs UDDAE.

Option 4 & 5: Backups/Recovers C drive. The backup is compatible with Ndure toolset.

After modding, this is how your C,E and C:\xodash\ folder should look like.
x0nlinedash.xbe and x2onlinedash.xbe won't be there if you selected "basic" installation:

← PriMas/C		
Name		Size
../		100--DIR
/Audio		16384
/bios		16384
/fonts	C	16384
/media		16384
/shadowc		16384
/xboxdashdata.185ead00		16384
/xodash		16384
*xb0xdash.xbe		1961984
*xboxdash.xbe		1929216
← PriMas/E/dash		
Name		Size
../		100--DIR
*Config.xml		4408
*English.xml	E/dash/	15658
*default.xbe		12981888
← PriMas/C/xodash		
Name		Size
../		100--DIR
/audio		16384
/media		16384
*Xbox.xtf	C/xodash/	72
*ernie.xtf		435
*update.xbe		12260992
*x0nlinedash.xbe		12617344
*x2onlinedash.xbe		12617344
*xonlinedash.xbe		1961984

UDDAE README

README

UDDAE (Uber Double Dash Audio Exploit)

NDURE INSTALLER 3.0

OFFICIAL TOPIC: <http://forums.xbox-scene.com/index.php?showtopic=444280>

WHAT IT IS: UDDAE is reincarnation of Audio exploit. MS Live 2.0+ dash has audio exploit fixed. UDDAE uses xboxdash.xbe from dashboard version 4920.17cdc100 (Uber dash). This xboxdash.xbe is audio exploitable. This xboxdash.xbe is renamed to settings_adoc.xip and replaced for original settings_adoc.xip in xboxdashdata.185ead00 folder. When dash is running easter egg runs settings_adoc.xip and thus causing audio exploit.

HOW TO INSTALL: Copy xboxdashdata.17cdc100 folder to C:\. Copy settings_adoc.xip from ndure installation folders "xboxdashdata.185ead00" folder to C:\xboxdashdata.185ead00\.

Copy ST.DB from Ndure installation folders E\TDATA\fffe0000\music\ST.DB to E:\TDATA\fffe0000\music\

HOW TO RUN: In xboxdash go to Music>blank soundtrack>Copy>Select>Copy>New Soundtrack><<Eggsβox>>(with two '<' Symbols, capital 'E', beta Accent 'β' and two '>' Symbols)>Done (UberDash starts)>Music>blank soundtrack>Copy>Copy>New Soundtrack>Done

Note: Use kernel specific ST.DB for best results.

Credits:

eh/Ndure Protagonist (Think-tank behind Ndure, UDDAE, best beta tester in world)
xman (first and only generic st.db for uddae, x2onlinedash/xboxdash toggle feature, great uber Nkpatcher_11)
rmenhal (god of exploit fallen from sky and gave us the st.db's, fonts and everything)
krayzie, Daddyj, Angerwound, PedrosPad, cio, devz3ro, Horscht and everyone who tested and helped developing.