

# Chameleon Pin Header Install:

## Step By Step Guide

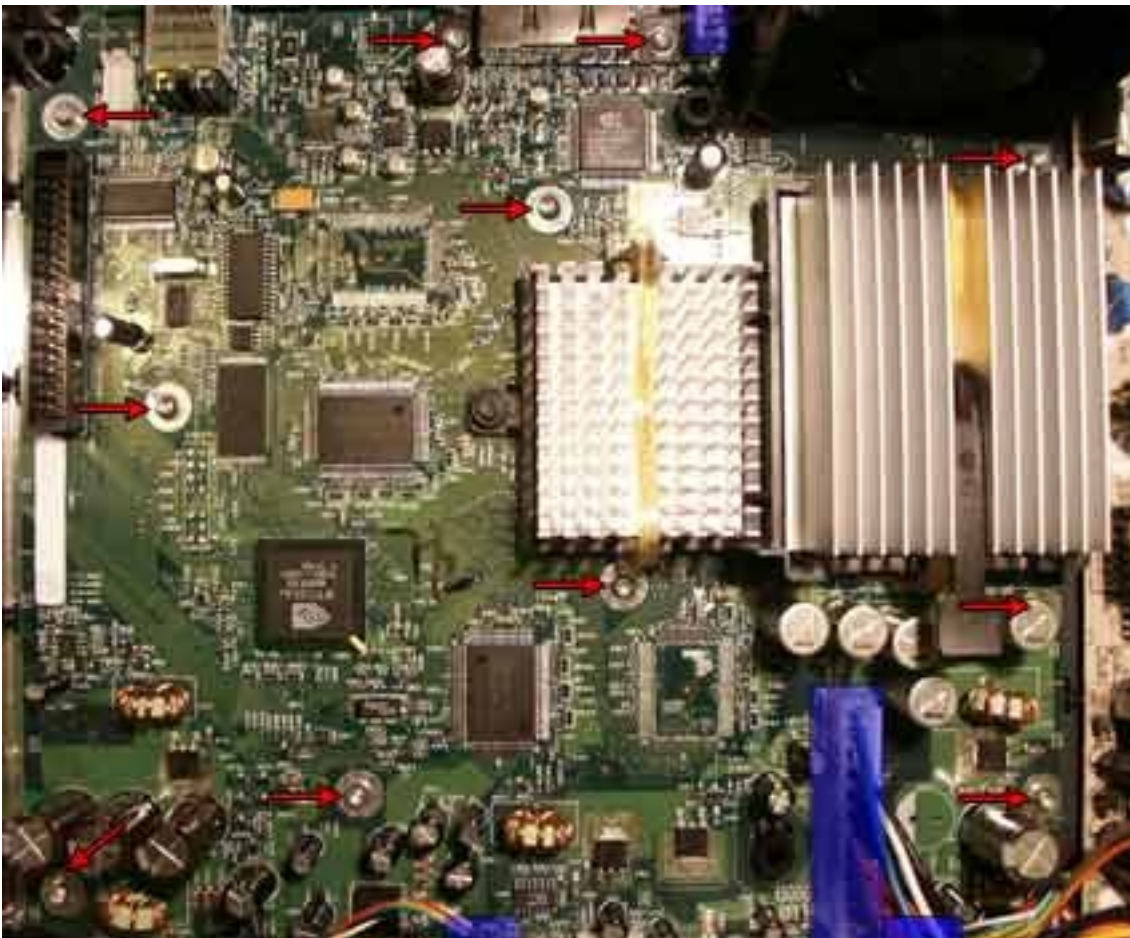
*Dear valued customer, we, the Xodus-Team developers of the Chameleon, would like to thank you for purchasing our latest innovation for your console. We believe that we have the most advanced and yet simple to use development system. This Manual will describe briefly the steps needed to install your Chameleon using the Pin Header.*

Please refer to the Console disassembly guide (found on our website)

### Step 1: Removing the mother board

Using a Torx 10 screwdriver remove all the screws indicated by red arrows in Fig 1a. Remove all connectors indicated by blue boxes in Fig 1a.

fig 1a

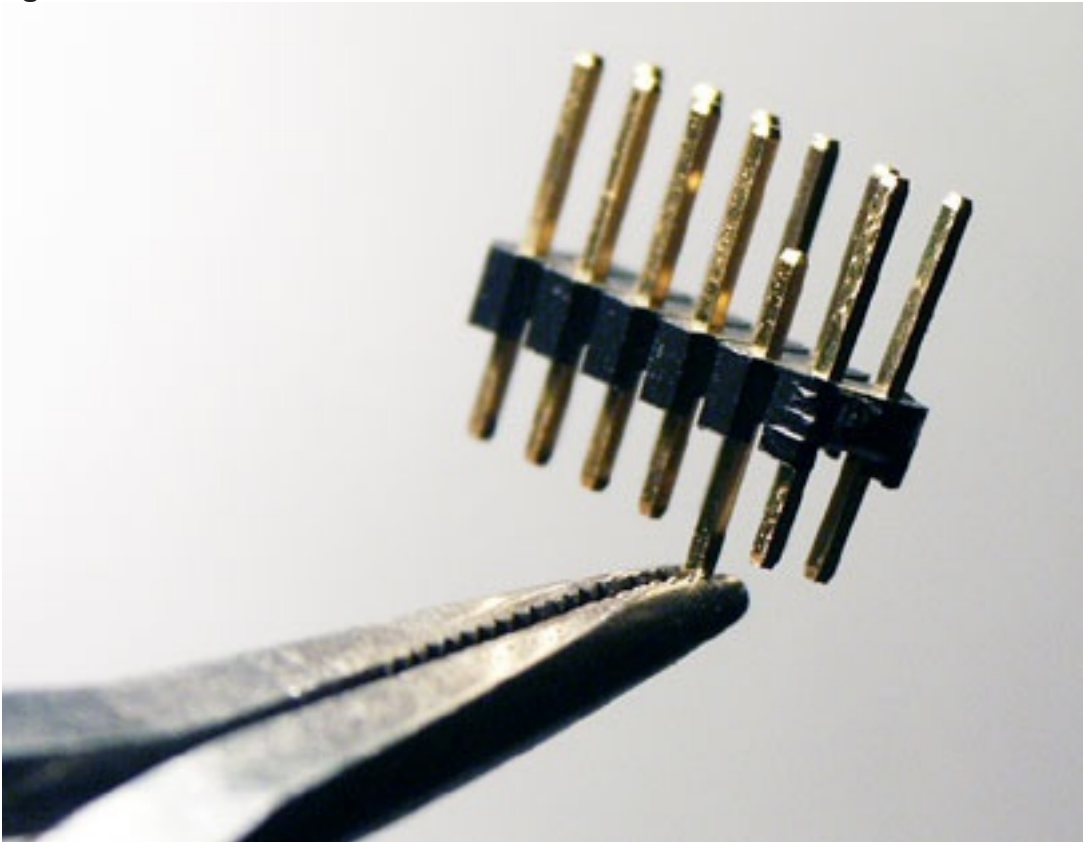


Carefully lift and remove the mother board (It is strongly recommended to use a grounding strap in order to ensure that the static sensitive devices on the mother board are not damaged)

## Step 2: Installing the Pin Header

Most newer mother boards have the LPC points empty, in which case simply place the supplied 2x6 pin header (remove the relevant “pin 4” by using a small pliers ) as seen in Fig 2a. and solder in from the bottom.

fig 2a



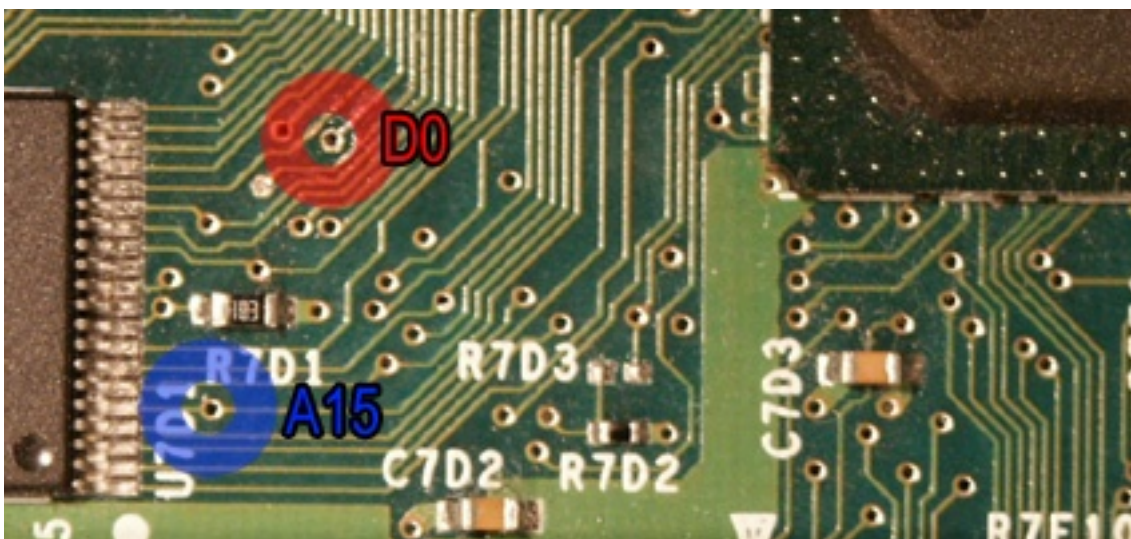
If you have an older mother board you will have to remove the solder from the LPC points, this can be done relatively easily using either solder wick (braid) or a simple solder sucker, ensure that your soldering iron is set to a moderately high temperature.

## Step 3: Replace mother board and solder D0.

Replace the mother board.

Locate D0:

fig 3a





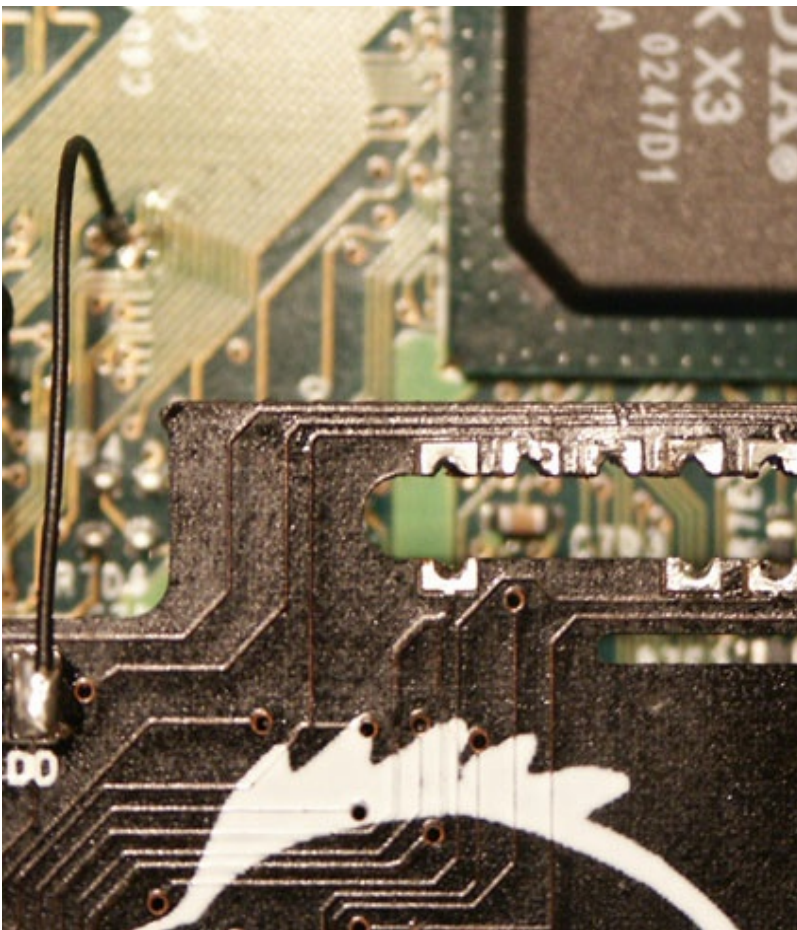
There are two different types of mother boards. The most common and older version are as seen in fig 3a. The newer version (easily differentiated by the smaller flash chip) fig 3b.

**fig 3b**



The area marked in red (for both versions) is the D0 point. Carefully solder a thin single strand wire (Kynar 30WAG ) to the D0 point and then to the point marked D0 on the Chameleon, fig 3c.

**fig 3c**



At this point your Chameleon is ready to use, the next step is for the additional features

incorporated into the chip as explained by the “Chameleon User Manual”

#### **Step 4: “Additional Features”**

A15: This point is used by the Chameleon for access to the onboard Bios we do not recommend the use of this point for the average user. The figures 3a and 3b (blue) are the two different positions for the A15 point depending on your version of mother board.

Power + Eject (P & E)

Again there are slight differences between the two different versions of mother board, Fig 4a shows the P and E points for the older mother boards while

**fig 4a**



Fig 4b for the newer mother board.

**fig 4b**

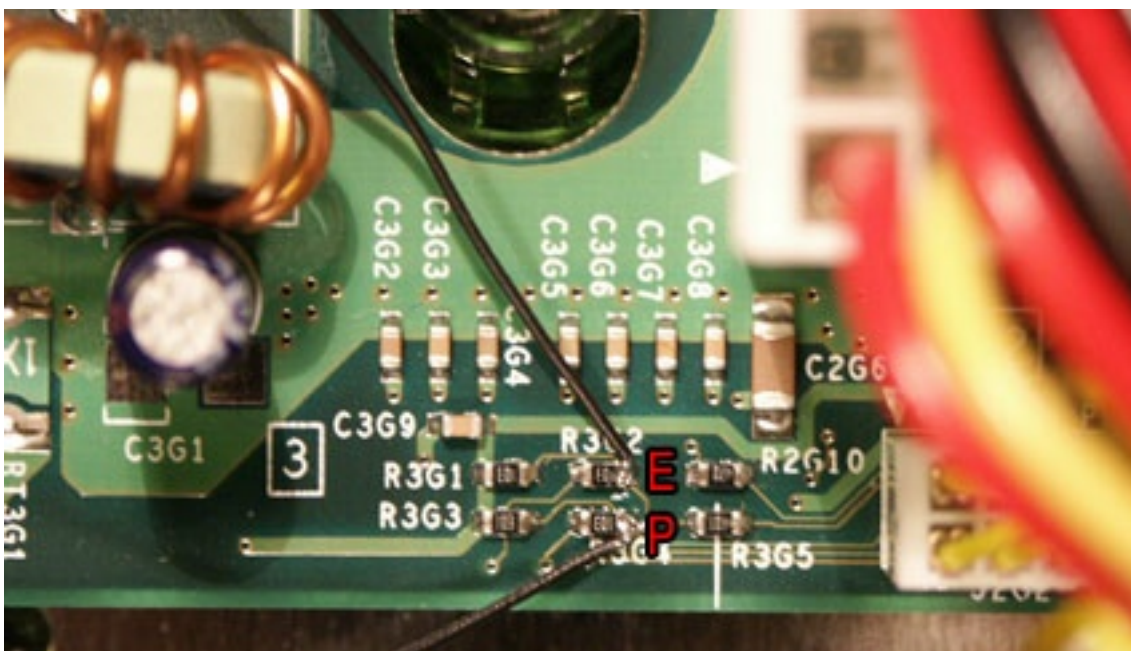




Fig 4c shows a complete installed unit with all options wired in :-)

**fig 4c**



Please refer to the User Manual for instructions on how to operate your Chameleon.

Wishing you many hours of fun and adventure,

**Yours,**

**Xodus-Team**